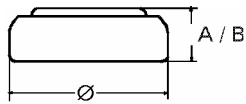


Data Sheet

Type Number 20370
Designation IEC SR 69
System Silver oxide / Zinc /
 KOH - Electrolyte



Nominal Voltage 1,55 V
Typical Capacity C 34 mAh
 Load 20 kOhm, at 20°C down to 1.2 V

Weight (approx.) 0,6 g
Volume 0,14 ccm
Coding..... Date of Manufacturing
 Month/Year

Temperature Ranges

	min	max.
Storage	-10°C	65°C
Discharge	-10°C	65°C

Dimensions

	min	max.
Diameter (Ø).....	9,3	9,5
Height (A/B)	1,8	2,1

Segment Watch / High Drain

Main Applications Watch
 Electronic

Typical Capacities (at 20°C)

Discharge Type	Load	End Voltage:	1.2 V
Continuous 24h/d, 7d/w Current [µA]:	20000 Ω 78	Time:	430 h
		Capacity [mAh]:	34
		Energy [mWh]:	54